

Mission College (West Valley Mission CCD)



3000 Mission College Blvd.
Santa Clara, California 95054

All Reports



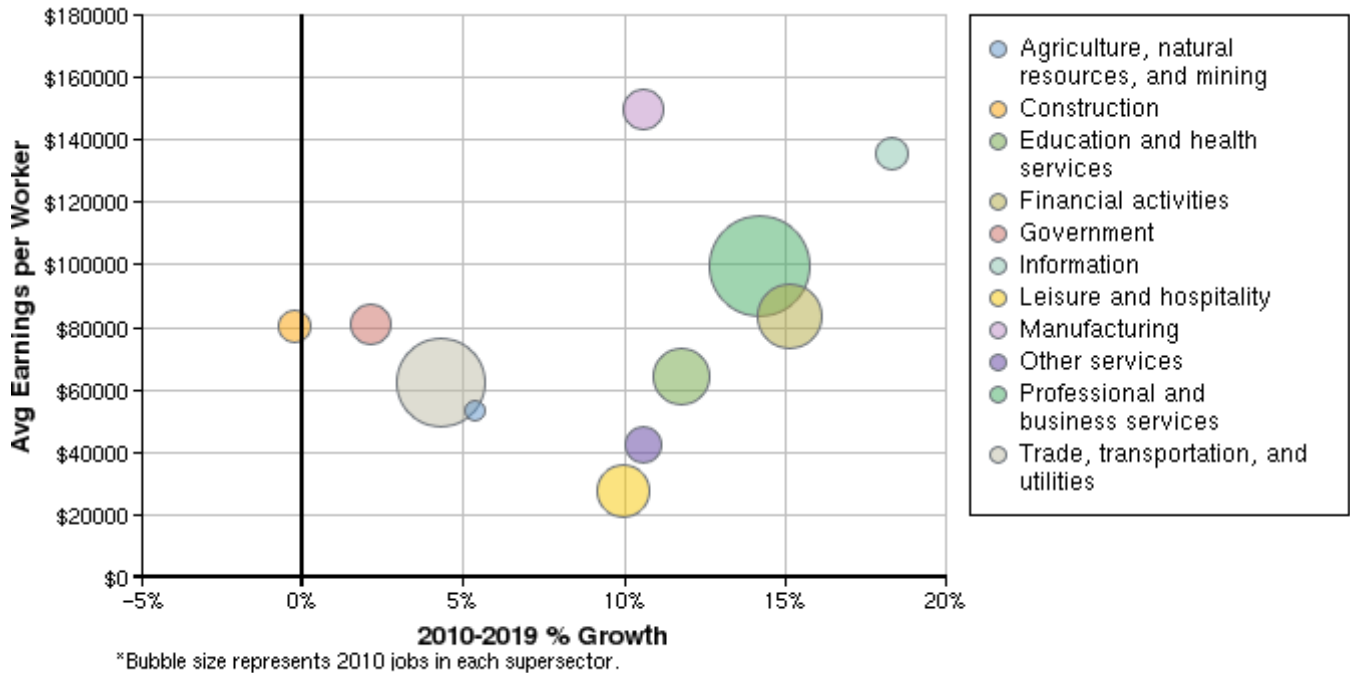
Region Info

Region: San Mateo County

County Areas: San Mateo, California (6081)

Industry Size and Growth

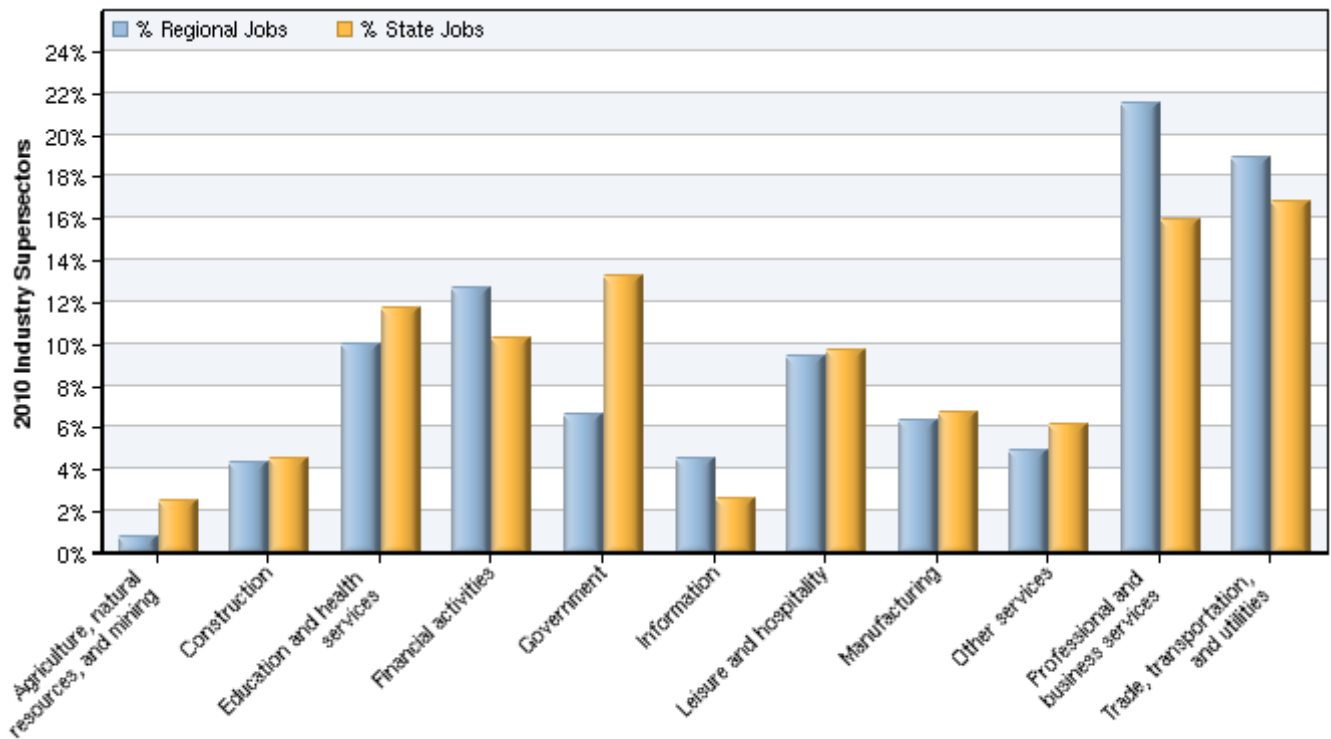
2010 - 2019 Size and Growth



Description	2010 Jobs	2019 Jobs	Growth	% Growth	2011 EPW
Agriculture, natural resources, and mining	3,633	3,828	195	5%	\$53,571
Construction	19,685	19,629	-56	0%	\$80,430
Education and health services	45,096	50,414	5,318	12%	\$64,300
Financial activities	57,308	65,994	8,686	15%	\$83,444
Government	29,850	30,470	620	2%	\$80,728
Information	20,161	23,850	3,689	18%	\$135,414
Leisure and hospitality	42,656	46,900	4,244	10%	\$27,714
Manufacturing	28,434	31,444	3,010	11%	\$149,936
Other services	21,929	24,252	2,323	11%	\$42,548
Professional and business services	96,965	110,751	13,786	14%	\$99,804
Trade, transportation, and utilities	85,392	89,055	3,663	4%	\$62,359
Total	451,108	496,587	45,479	10%	\$79,990

Source: EMSI Complete Employment - 2011.2

2010 Industrial Makeup

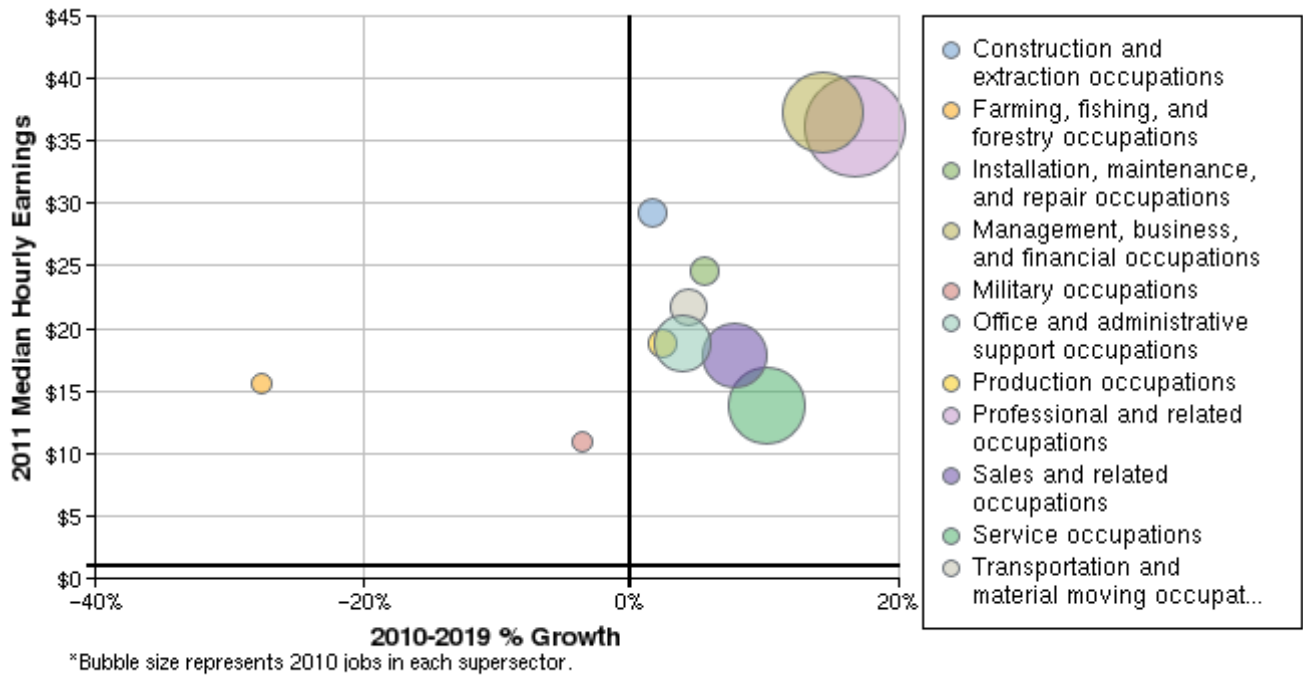


Description	2010 Regional Jobs	% Regional Jobs	2010 State Jobs	% State Jobs
Agriculture, natural resources, and mining	3,633	0.8%	488,062	2.5%
Construction	19,685	4.4%	880,911	4.5%
Education and health services	45,096	10.0%	2,290,583	11.7%
Financial activities	57,308	12.7%	2,011,022	10.2%
Government	29,850	6.6%	2,609,080	13.3%
Information	20,161	4.5%	512,903	2.6%
Leisure and hospitality	42,656	9.5%	1,904,111	9.7%
Manufacturing	28,434	6.3%	1,318,942	6.7%
Other services	21,929	4.9%	1,198,143	6.1%
Professional and business services	96,965	21.5%	3,126,241	15.9%
Trade, transportation, and utilities	85,392	18.9%	3,292,653	16.8%

Source: EMSI Complete Employment - 2011.2

Occupation Size and Growth

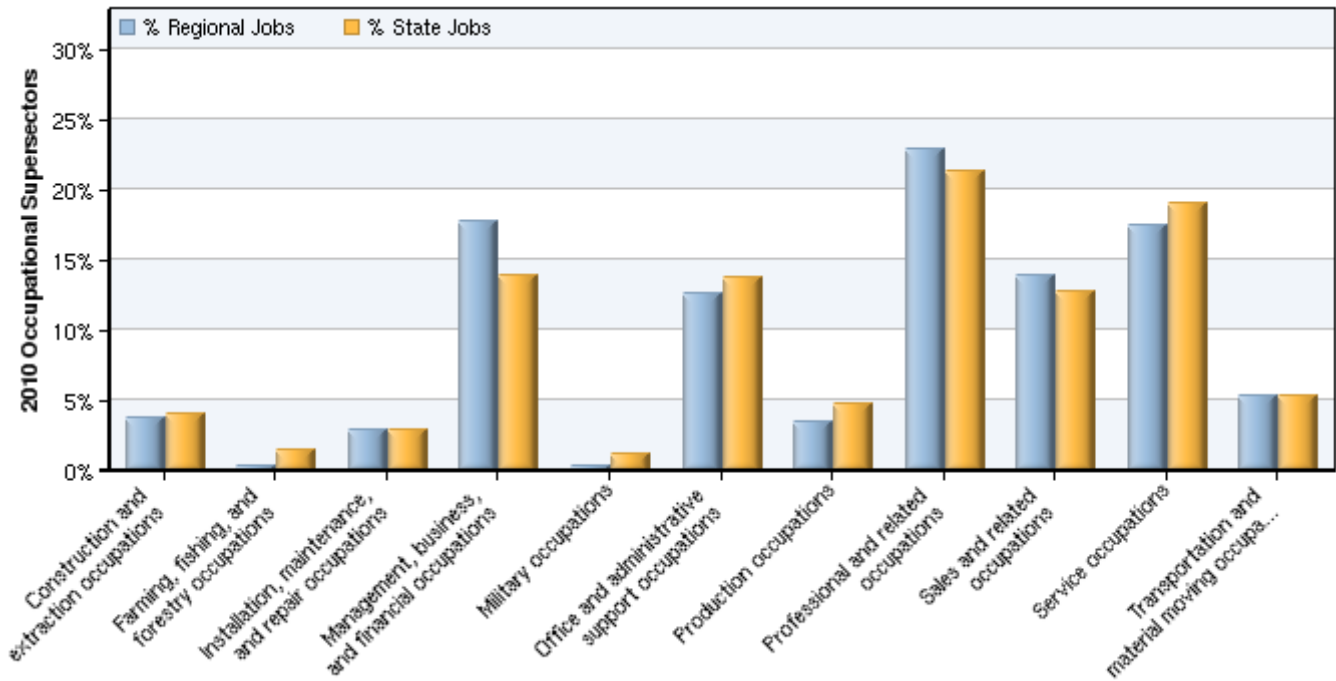
2010 - 2019 Size and Growth



Description	2010 Jobs	2019 Jobs	Growth	% Growth	2011 Median Hourly Earnings
Construction and extraction occupations	16,616	16,881	265	2%	\$29.30
Farming, fishing, and forestry occupations	1,418	1,027	-391	-28%	\$15.66
Installation, maintenance, and repair occupations	12,699	13,399	700	6%	\$24.53
Management, business, and financial occupations	79,779	91,154	11,375	14%	\$37.31
Military occupations	1,301	1,254	-47	-4%	\$10.86
Office and administrative support occupations	56,723	58,938	2,215	4%	\$18.86
Production occupations	15,190	15,543	353	2%	\$18.83
Professional and related occupations	103,011	120,172	17,161	17%	\$36.14
Sales and related occupations	62,195	67,045	4,850	8%	\$17.89
Service occupations	78,569	86,560	7,991	10%	\$13.77
Transportation and material moving occupations	23,606	24,614	1,008	4%	\$21.71
Total	451,108	496,587	45,479	10%	\$25.75

Source: EMSI Complete Employment - 2011.2

2010 Occupational Makeup

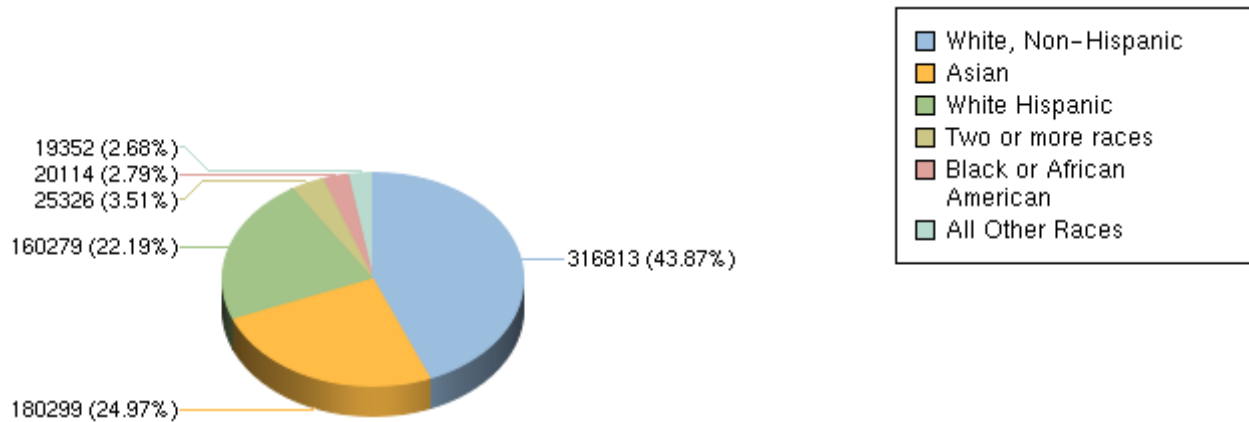


Description	2010 Regional Jobs	% Regional Jobs	2010 State Jobs	% State Jobs
Construction and extraction occupations	16,616	3.7%	773,053	3.9%
Farming, fishing, and forestry occupations	1,418	0.3%	282,983	1.4%
Installation, maintenance, and repair occupations	12,699	2.8%	569,395	2.9%
Management, business, and financial occupations	79,779	17.7%	2,726,574	13.9%
Military occupations	1,301	0.3%	221,963	1.1%
Office and administrative support occupations	56,723	12.6%	2,694,206	13.7%
Production occupations	15,190	3.4%	928,416	4.7%
Professional and related occupations	103,011	22.8%	4,169,709	21.2%
Sales and related occupations	62,195	13.8%	2,496,414	12.7%
Service occupations	78,569	17.4%	3,727,339	19.0%
Transportation and material moving occupations	23,606	5.2%	1,042,599	5.3%

Source: EMSI Complete Employment - 2011.2

Demographic Overview

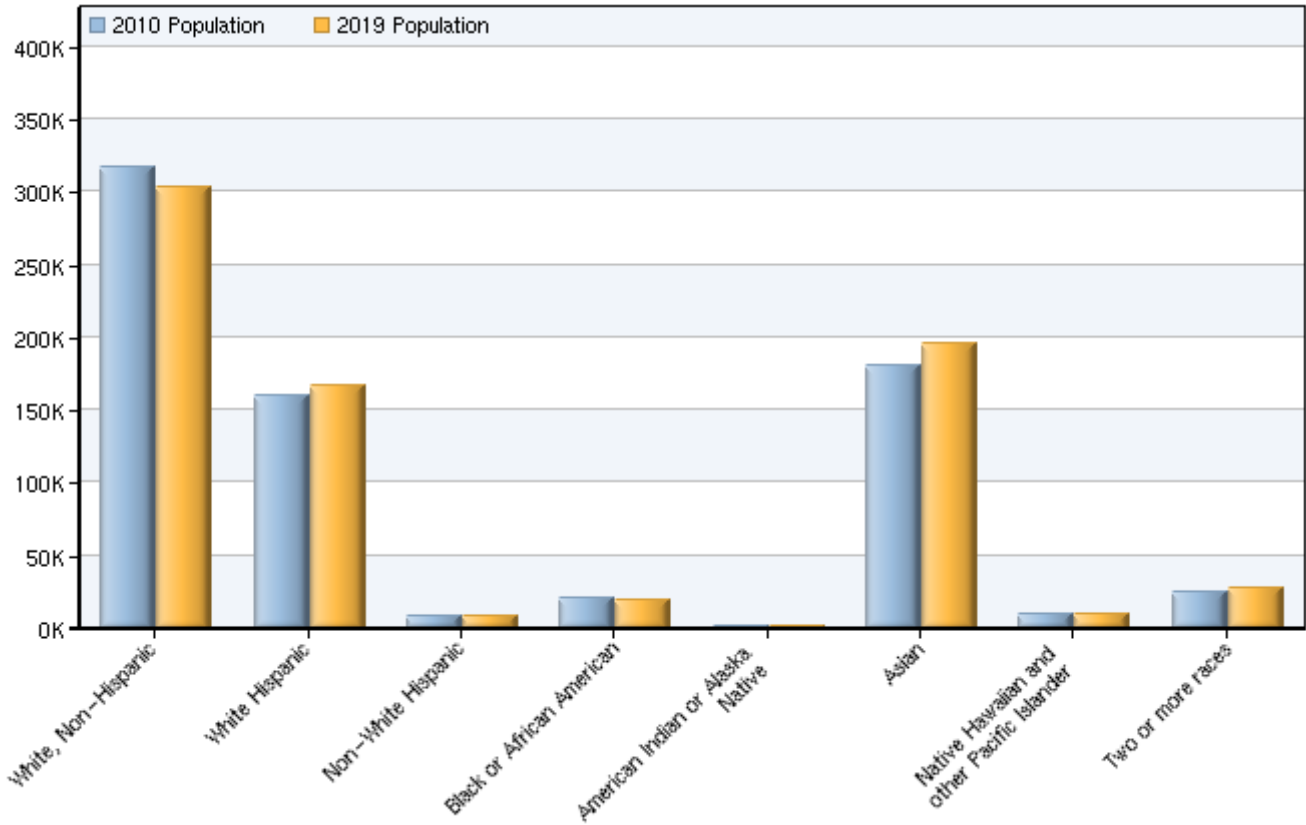
2010 Race/Ethnicity Breakdown



Ethnicity	2010 Population	% of Region
White, Non-Hispanic	316,813	43.87%
White Hispanic	160,279	22.19%
Non-White Hispanic	8,408	1.16%
Black or African American	20,114	2.79%
American Indian or Alaska Native	1,536	0.21%
Asian	180,299	24.97%
Native Hawaiian and other Pacific Islander	9,408	1.30%
Two or more races	25,326	3.51%

Source: EMSI Complete Employment - 2011.2

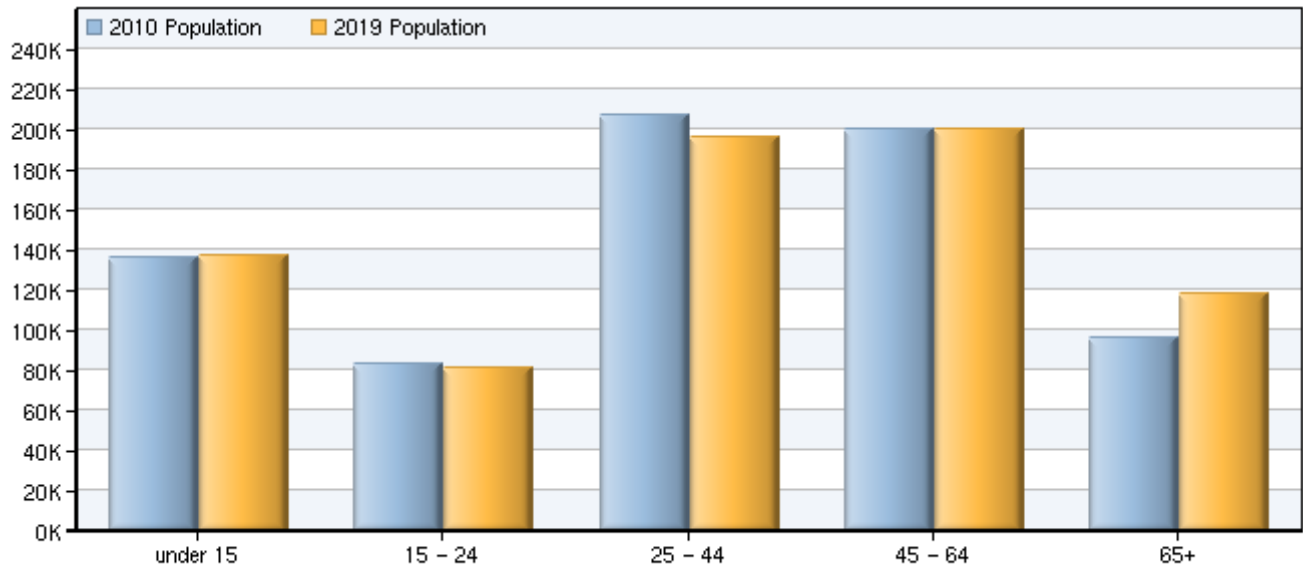
2010 - 2019 Race/Ethnicity Size and Growth



Race/Ethnicity	2010 Population	2019 Population	Change	% Change
White, Non-Hispanic	316,813	303,700	-13,113	-4%
White Hispanic	160,279	166,764	6,485	4%
Non-White Hispanic	8,408	8,732	324	4%
Black or African American	20,114	19,006	-1,108	-6%
American Indian or Alaska Native	1,536	1,526	-10	-1%
Asian	180,299	195,181	14,882	8%
Native Hawaiian and other Pacific Islander	9,408	9,438	30	0%
Two or more races	25,326	27,753	2,427	10%
Total	722,182	732,100	9,918	1%

Source: EMSI Complete Employment - 2011.2

2010 - 2019 Age Size and Growth



Age	2010 Population	2019 Population	Change	% Change
under 15	135,676	136,815	1,139	1%
15 - 24	82,973	80,664	-2,309	-3%
25 - 44	207,242	196,248	-10,994	-5%
45 - 64	200,144	200,101	-43	0%
65+	96,147	118,272	22,125	23%
Total	722,182	732,100	9,918	1%

Source: EMSI Complete Employment - 2011.2

Industry Data

In order to capture a complete picture of industry employment, EMSI basically combines covered employment data from Quarterly Census of Employment and Wages (QCEW) produced by the Department of Labor with total employment data in Regional Economic Information System (REIS) published by the Bureau of Economic Analysis (BEA), augmented with County Business Patterns (CBP) and Nonemployer Statistics (NES) published by the U.S. Census Bureau. Projections are based on the latest available EMSI industry data, 15-year past local trends in each industry, growth rates in statewide and (where available) sub-state area industry projections published by individual state agencies, and (in part) growth rates in national projections from the Bureau of Labor Statistics.

Occupation Data

Organizing regional employment information by occupation provides a workforce-oriented view of the regional economy. EMSI's occupation data are based on EMSI's industry data and regional staffing patterns taken from the Occupational Employment Statistics program (U.S. Bureau of Labor Statistics). Wage information is partially derived from the American Community Survey. The occupation-to-program (SOC-to-CIP) crosswalk is based on one from the U.S. Department of Education, with customizations by EMSI.

Demographic Data

The demographic data in this report is compiled from several sources using a specialized process. Sources include US Census Bureau annual estimates, birth and mortality rates from the US Health Department, and projected regional job growth.

State Data Sources

This report uses state data from the following agencies: California Labor Market Information Department.