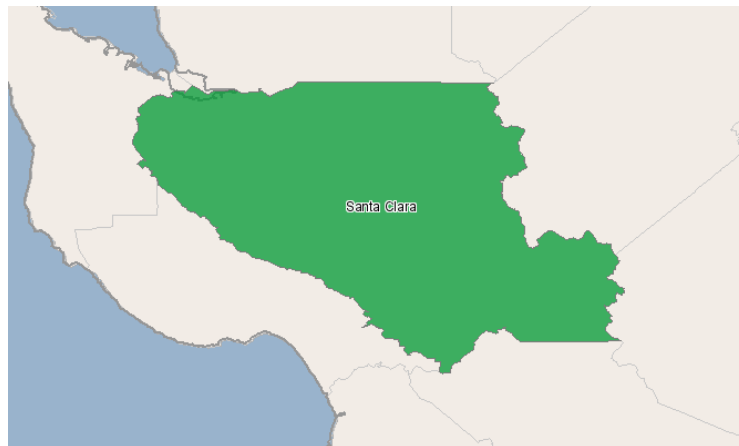


Mission College (West Valley Mission CCD)



3000 Mission College Blvd.
Santa Clara, California 95054

All Reports



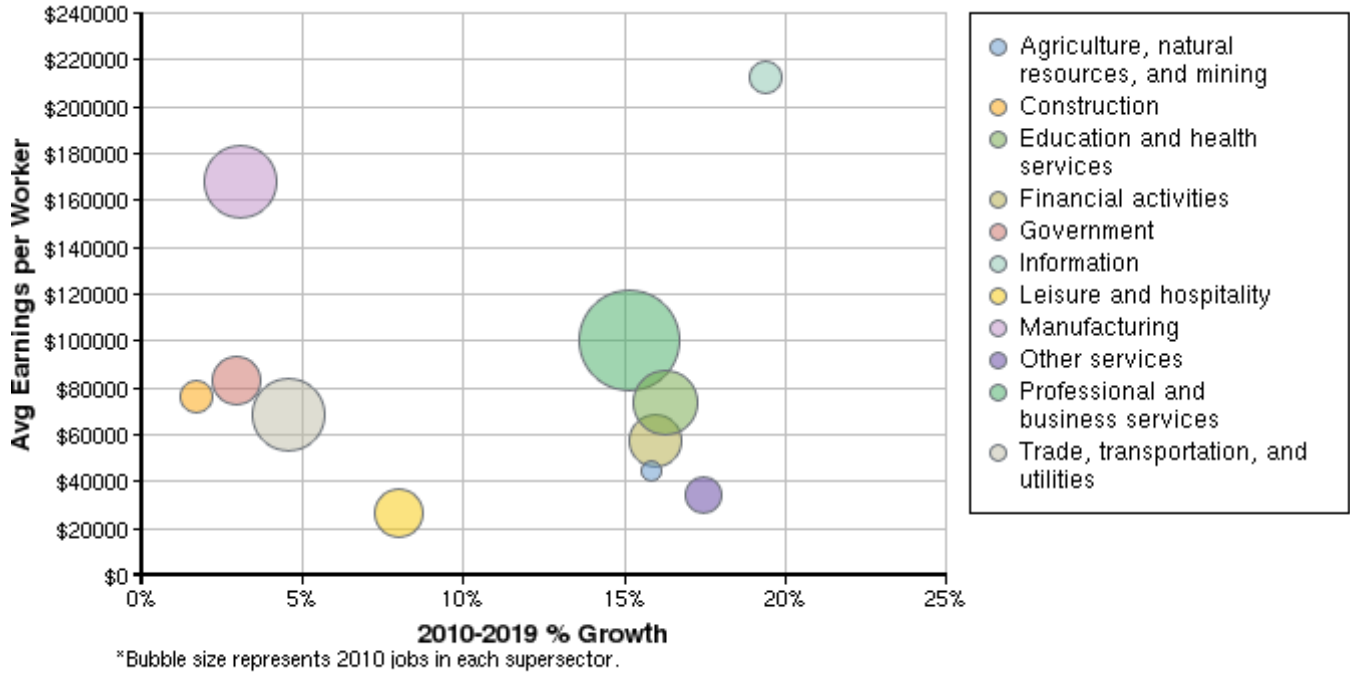
Region Info

Region: Santa Clara County

County Areas: Santa Clara, California (6085)

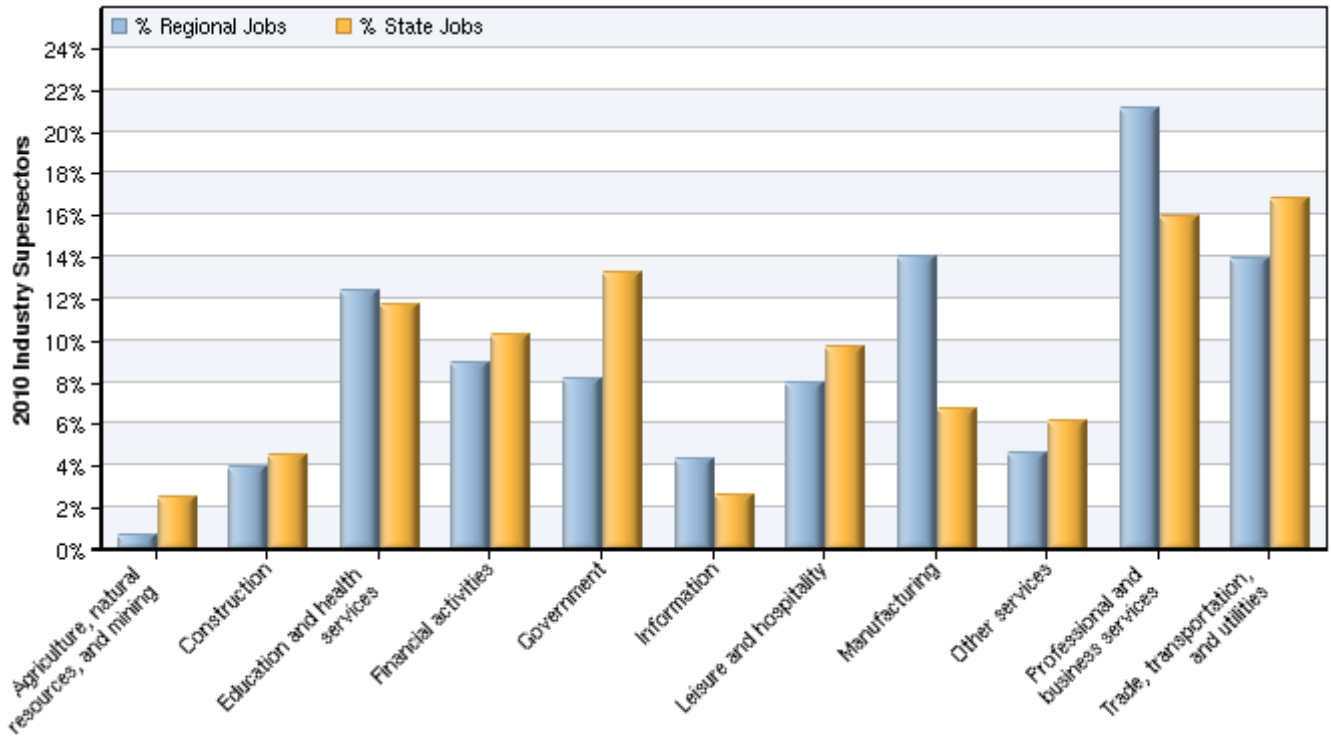
Industry Size and Growth

2010 - 2019 Size and Growth



Description	2010 Jobs	2019 Jobs	Growth	% Growth	2011 EPW
Agriculture, natural resources, and mining	7,055	8,170	1,115	16%	\$44,204
Construction	43,198	43,917	719	2%	\$76,111
Education and health services	137,107	159,416	22,309	16%	\$73,394
Financial activities	99,270	115,126	15,856	16%	\$57,460
Government	89,835	92,444	2,609	3%	\$83,019
Information	47,980	57,283	9,303	19%	\$212,805
Leisure and hospitality	88,141	95,156	7,015	8%	\$26,576
Manufacturing	155,343	160,119	4,776	3%	\$167,854
Other services	50,809	59,687	8,878	17%	\$34,233
Professional and business services	234,304	269,783	35,479	15%	\$99,910
Trade, transportation, and utilities	154,237	161,229	6,992	5%	\$68,354
Total	1,107,277	1,222,329	115,052	10%	\$91,712

2010 Industrial Makeup

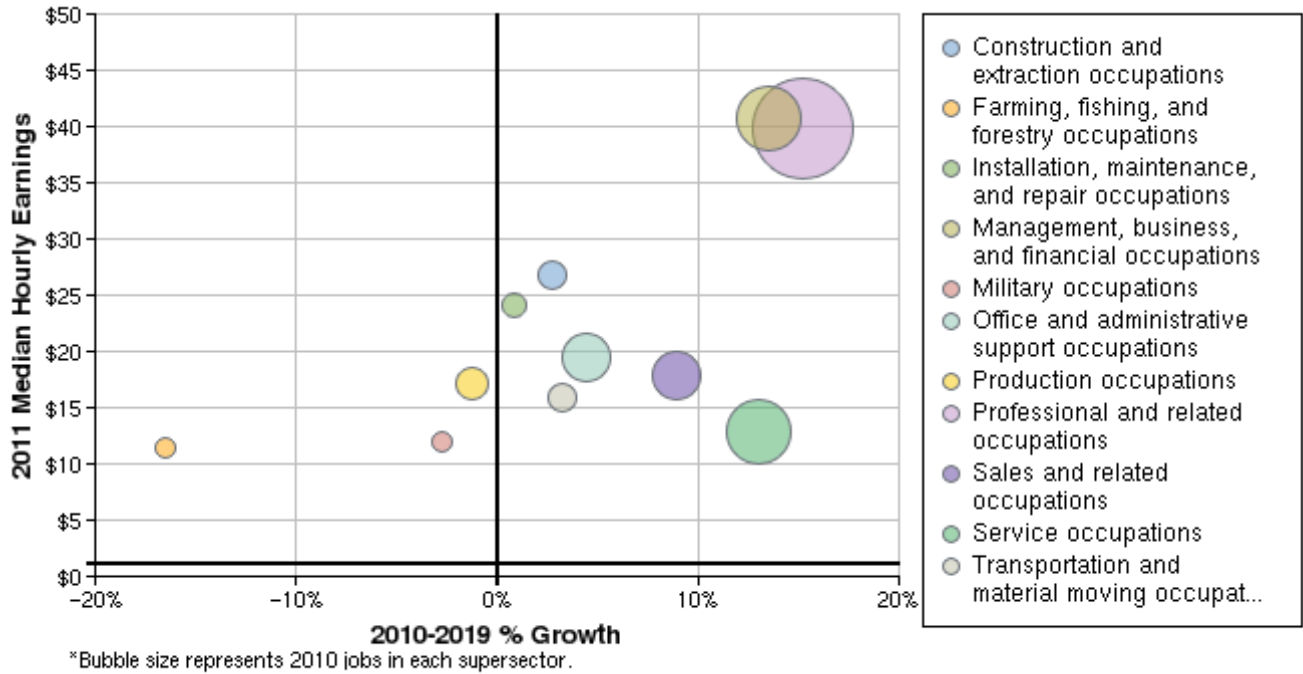


Description	2010 Regional Jobs	% Regional Jobs	2010 State Jobs	% State Jobs
Agriculture, natural resources, and mining	7,055	0.6%	488,062	2.5%
Construction	43,198	3.9%	880,911	4.5%
Education and health services	137,107	12.4%	2,290,583	11.7%
Financial activities	99,270	9.0%	2,011,022	10.2%
Government	89,835	8.1%	2,609,080	13.3%
Information	47,980	4.3%	512,903	2.6%
Leisure and hospitality	88,141	8.0%	1,904,111	9.7%
Manufacturing	155,343	14.0%	1,318,942	6.7%
Other services	50,809	4.6%	1,198,143	6.1%
Professional and business services	234,304	21.2%	3,126,241	15.9%
Trade, transportation, and utilities	154,237	13.9%	3,292,653	16.8%

Source: EMSI Complete Employment - 2011.2

Occupation Size and Growth

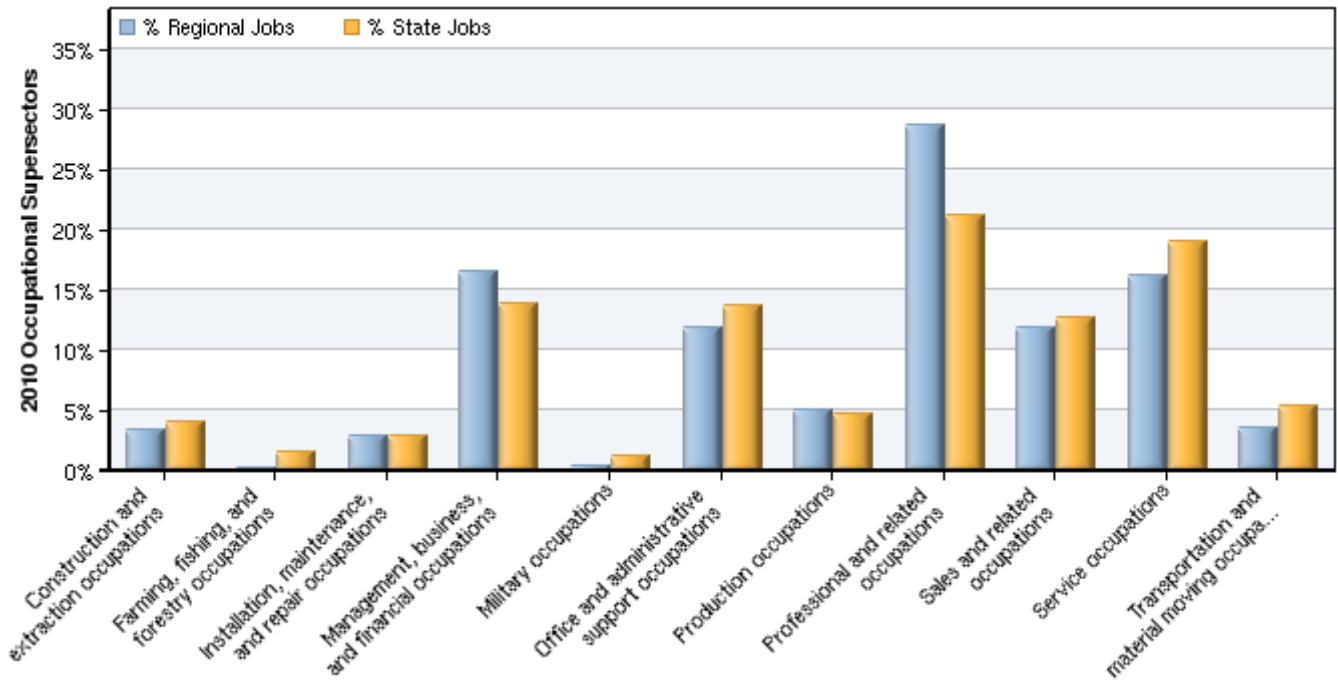
2010 - 2019 Size and Growth



Description	2010 Jobs	2019 Jobs	Growth	% Growth	2011 Median Hourly Earnings
Construction and extraction occupations	37,755	38,802	1,047	3%	\$26.75
Farming, fishing, and forestry occupations	2,216	1,850	-366	-17%	\$11.49
Installation, maintenance, and repair occupations	30,491	30,760	269	1%	\$24.14
Management, business, and financial occupations	181,807	206,291	24,484	13%	\$40.75
Military occupations	3,208	3,119	-89	-3%	\$12.01
Office and administrative support occupations	130,107	135,827	5,720	4%	\$19.44
Production occupations	54,834	54,132	-702	-1%	\$17.20
Professional and related occupations	317,772	366,234	48,462	15%	\$39.87
Sales and related occupations	131,300	142,960	11,660	9%	\$17.83
Service occupations	178,309	201,579	23,270	13%	\$12.88
Transportation and material moving occupations	39,480	40,776	1,296	3%	\$15.90
Total	1,107,277	1,222,329	115,052	10%	\$27.71

Source: EMSI Complete Employment - 2011.2

2010 Occupational Makeup

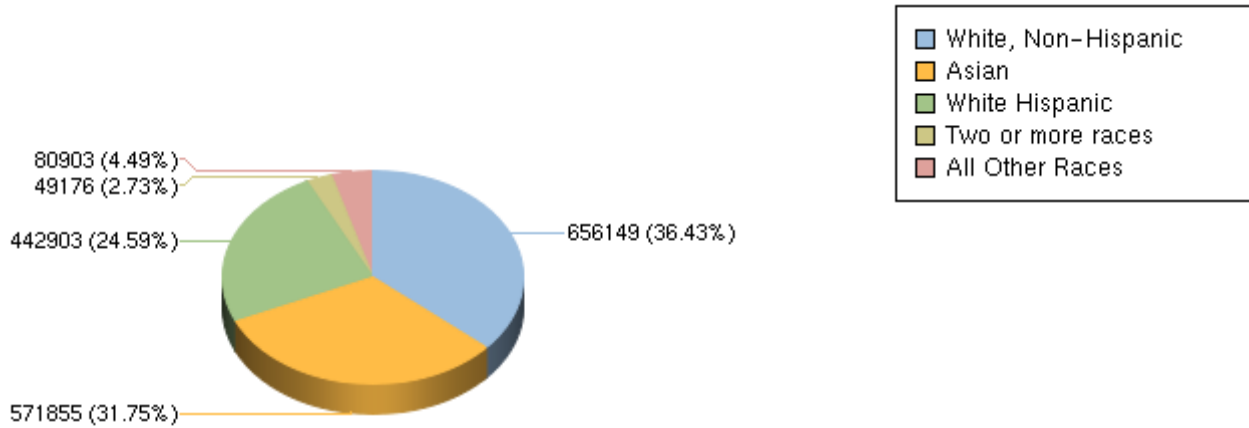


Description	2010 Regional Jobs	% Regional Jobs	2010 State Jobs	% State Jobs
Construction and extraction occupations	37,755	3.4%	773,053	3.9%
Farming, fishing, and forestry occupations	2,216	0.2%	282,983	1.4%
Installation, maintenance, and repair occupations	30,491	2.8%	569,395	2.9%
Management, business, and financial occupations	181,807	16.4%	2,726,574	13.9%
Military occupations	3,208	0.3%	221,963	1.1%
Office and administrative support occupations	130,107	11.8%	2,694,206	13.7%
Production occupations	54,834	5.0%	928,416	4.7%
Professional and related occupations	317,772	28.7%	4,169,709	21.2%
Sales and related occupations	131,300	11.9%	2,496,414	12.7%
Service occupations	178,309	16.1%	3,727,339	19.0%
Transportation and material moving occupations	39,480	3.6%	1,042,599	5.3%

Source: EMSI Complete Employment - 2011.2

Demographic Overview

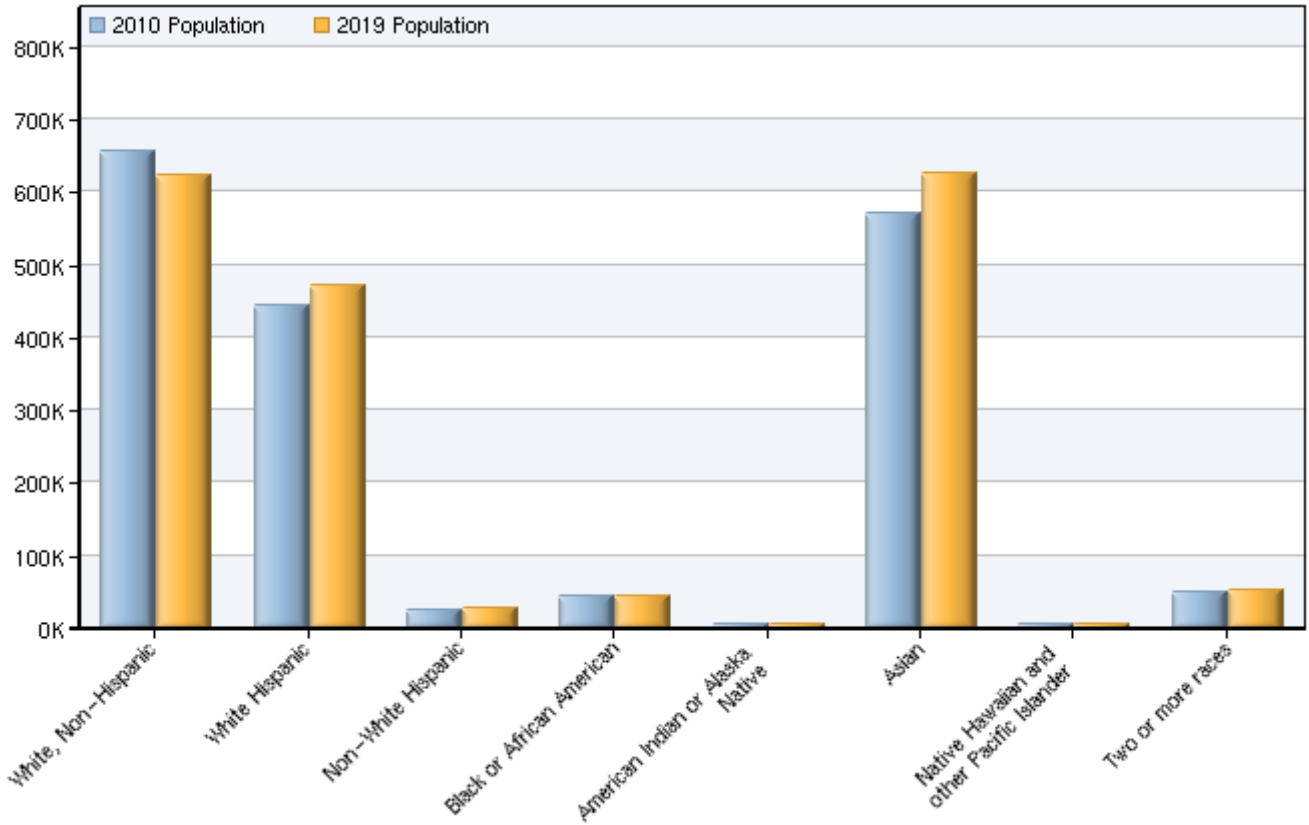
2010 Race/Ethnicity Breakdown



Ethnicity	2010 Population	% of Region
White, Non-Hispanic	656,149	36.43%
White Hispanic	442,903	24.59%
Non-White Hispanic	26,116	1.45%
Black or African American	44,126	2.45%
American Indian or Alaska Native	4,593	0.26%
Asian	571,855	31.75%
Native Hawaiian and other Pacific Islander	6,068	0.34%
Two or more races	49,176	2.73%

Source: EMSI Complete Employment - 2011.2

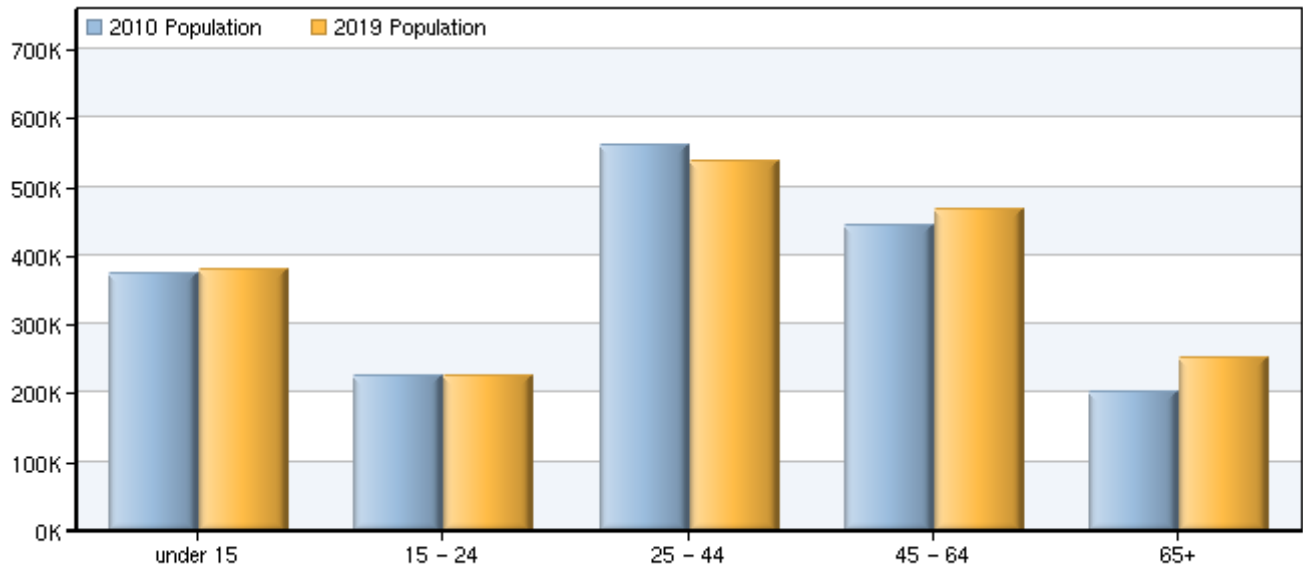
2010 - 2019 Race/Ethnicity Size and Growth



Race/Ethnicity	2010 Population	2019 Population	Change	% Change
White, Non-Hispanic	656,149	624,527	-31,622	-5%
White Hispanic	442,903	472,654	29,751	7%
Non-White Hispanic	26,116	27,769	1,653	6%
Black or African American	44,126	44,076	-50	0%
American Indian or Alaska Native	4,593	4,291	-302	-7%
Asian	571,855	626,964	55,109	10%
Native Hawaiian and other Pacific Islander	6,068	6,414	346	6%
Two or more races	49,176	52,734	3,558	7%
Total	1,800,985	1,859,429	58,444	3%

Source: EMSI Complete Employment - 2011.2

2010 - 2019 Age Size and Growth



Age	2010 Population	2019 Population	Change	% Change
under 15	373,371	379,350	5,979	2%
15 - 24	223,414	225,967	2,553	1%
25 - 44	560,355	536,536	-23,819	-4%
45 - 64	443,619	466,537	22,918	5%
65+	200,226	251,039	50,813	25%
Total	1,800,985	1,859,429	58,444	3%

Source: EMSI Complete Employment - 2011.2

Industry Data

In order to capture a complete picture of industry employment, EMSI basically combines covered employment data from Quarterly Census of Employment and Wages (QCEW) produced by the Department of Labor with total employment data in Regional Economic Information System (REIS) published by the Bureau of Economic Analysis (BEA), augmented with County Business Patterns (CBP) and Nonemployer Statistics (NES) published by the U.S. Census Bureau. Projections are based on the latest available EMSI industry data, 15-year past local trends in each industry, growth rates in statewide and (where available) sub-state area industry projections published by individual state agencies, and (in part) growth rates in national projections from the Bureau of Labor Statistics.

Occupation Data

Organizing regional employment information by occupation provides a workforce-oriented view of the regional economy. EMSI's occupation data are based on EMSI's industry data and regional staffing patterns taken from the Occupational Employment Statistics program (U.S. Bureau of Labor Statistics). Wage information is partially derived from the American Community Survey. The occupation-to-program (SOC-to-CIP) crosswalk is based on one from the U.S. Department of Education, with customizations by EMSI.

Demographic Data

The demographic data in this report is compiled from several sources using a specialized process. Sources include US Census Bureau annual estimates, birth and mortality rates from the US Health Department, and projected regional job growth.

State Data Sources

This report uses state data from the following agencies: California Labor Market Information Department.