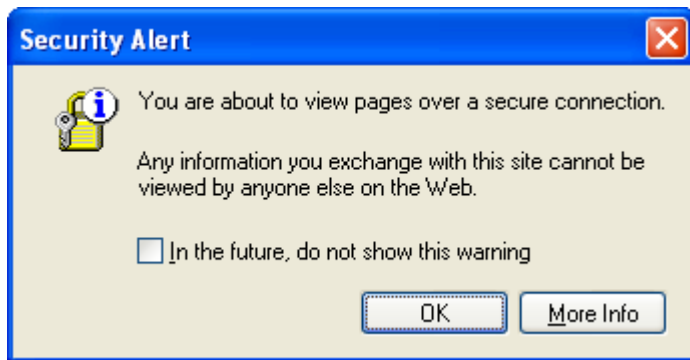


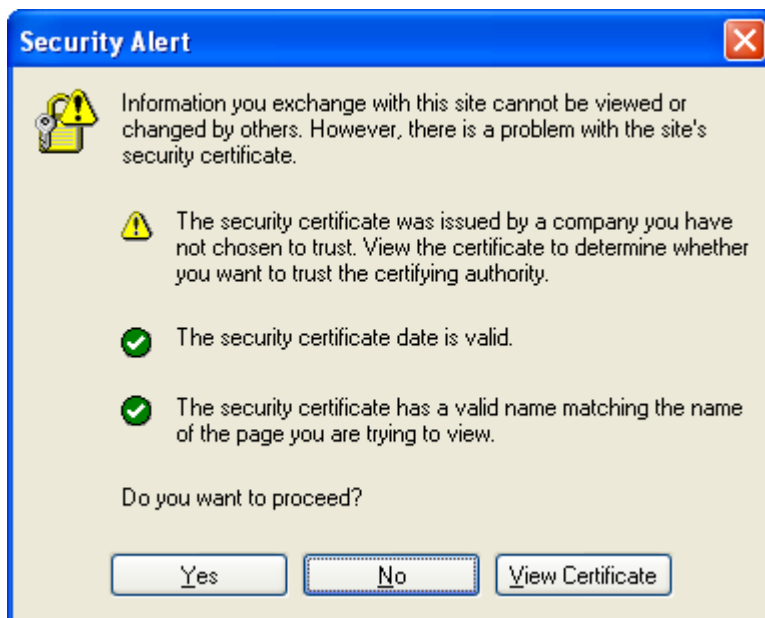
Logging on to the WVM-WiFi Network

1. **Open your network settings**
2. **Make sure your wireless network card is active.**
3. **You should detect the *WVM-WIFI* network**
4. **Your TCP/IP settings should be set for address resolution via DHCP.**
5. **Close your network settings.**

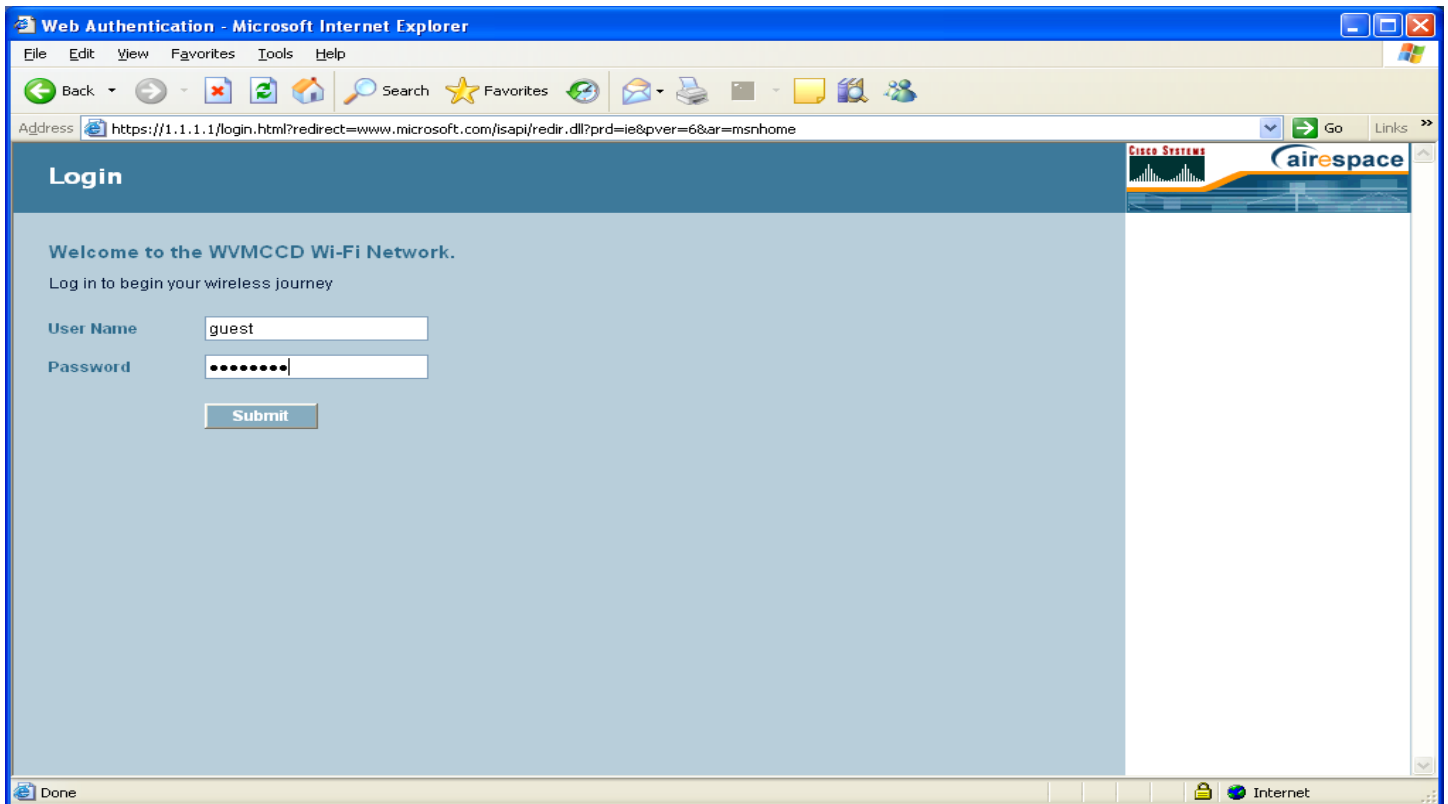
1. Bring up your Internet browser. You will see this *Security Alert*, click **OK**.



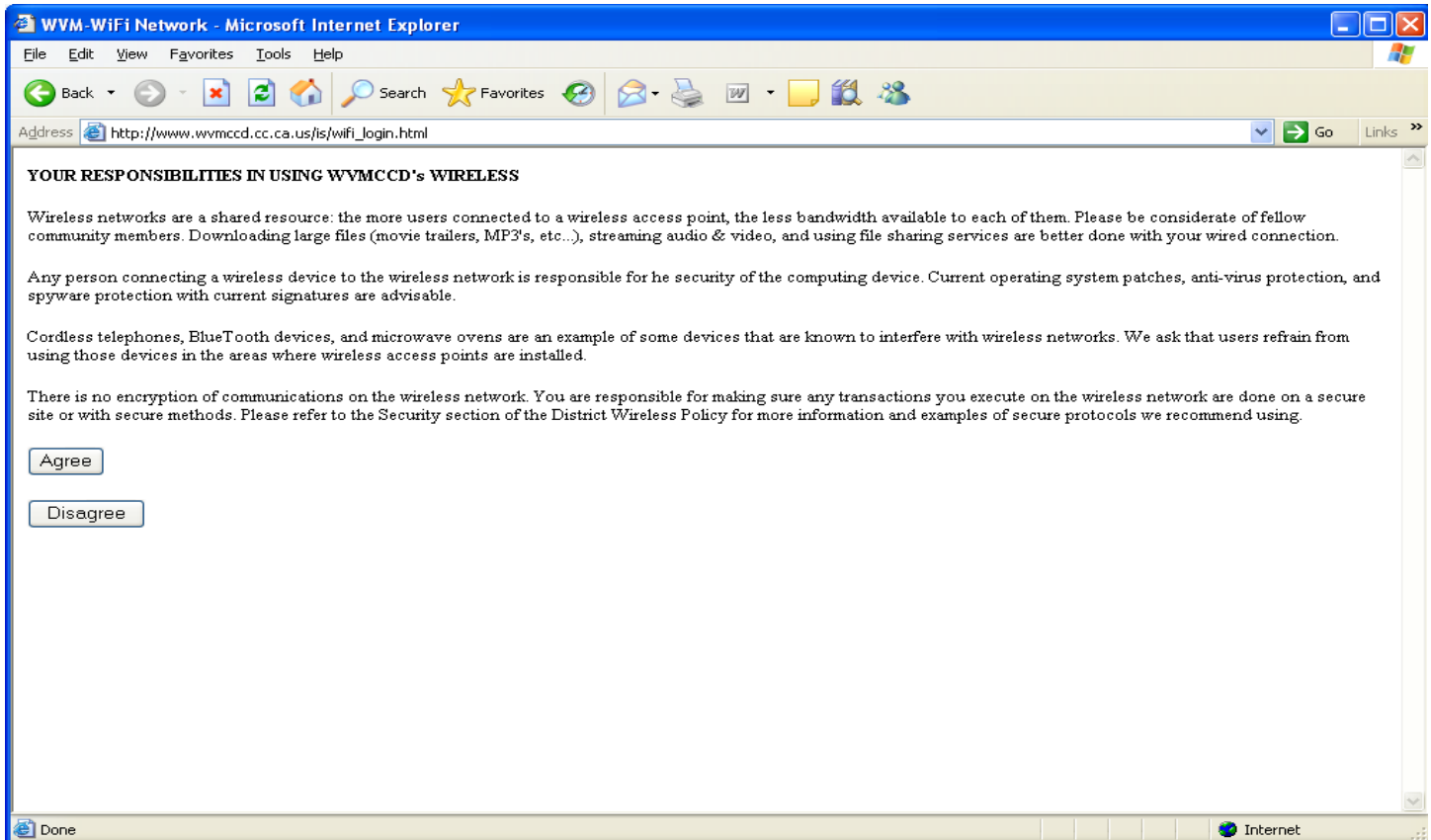
2. This *Security Alert* screen will appear, click **YES**.



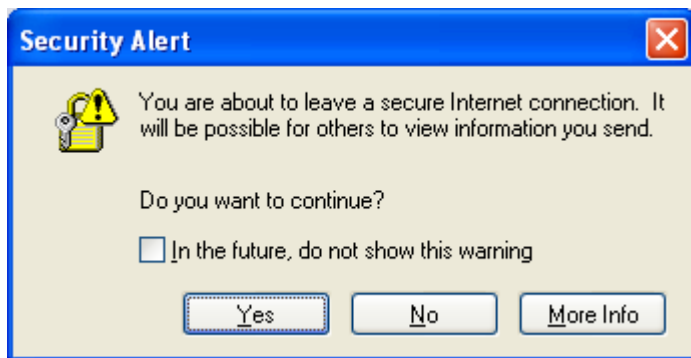
3. This logon screen will appear. Type in **guest** as the *User Name* and type in **wireless** as the *Password*.



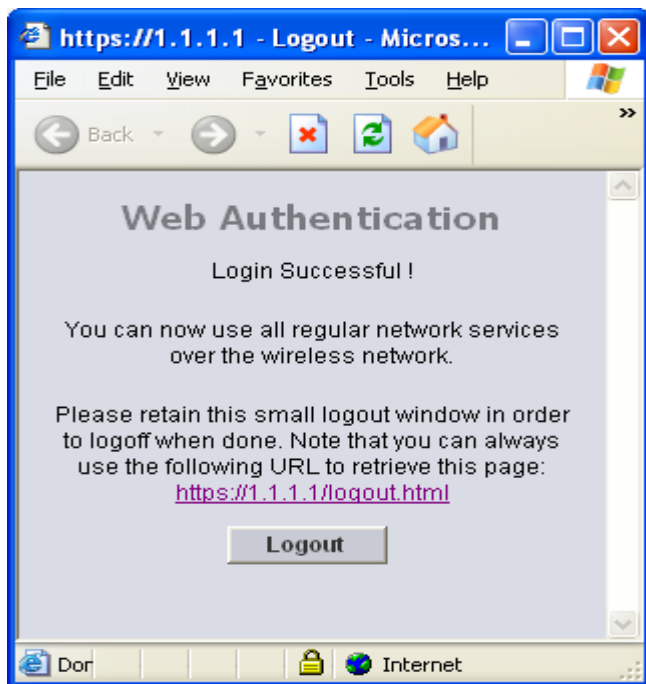
4. This screen explains the responsibilities for using WVMCCD's wireless network.



5. This *Security Alert* will appear, click *Yes*.



6. This *Web Authentication* screen will appear. You are now connected.



7. To Disconnect, click the *Logout* button.

