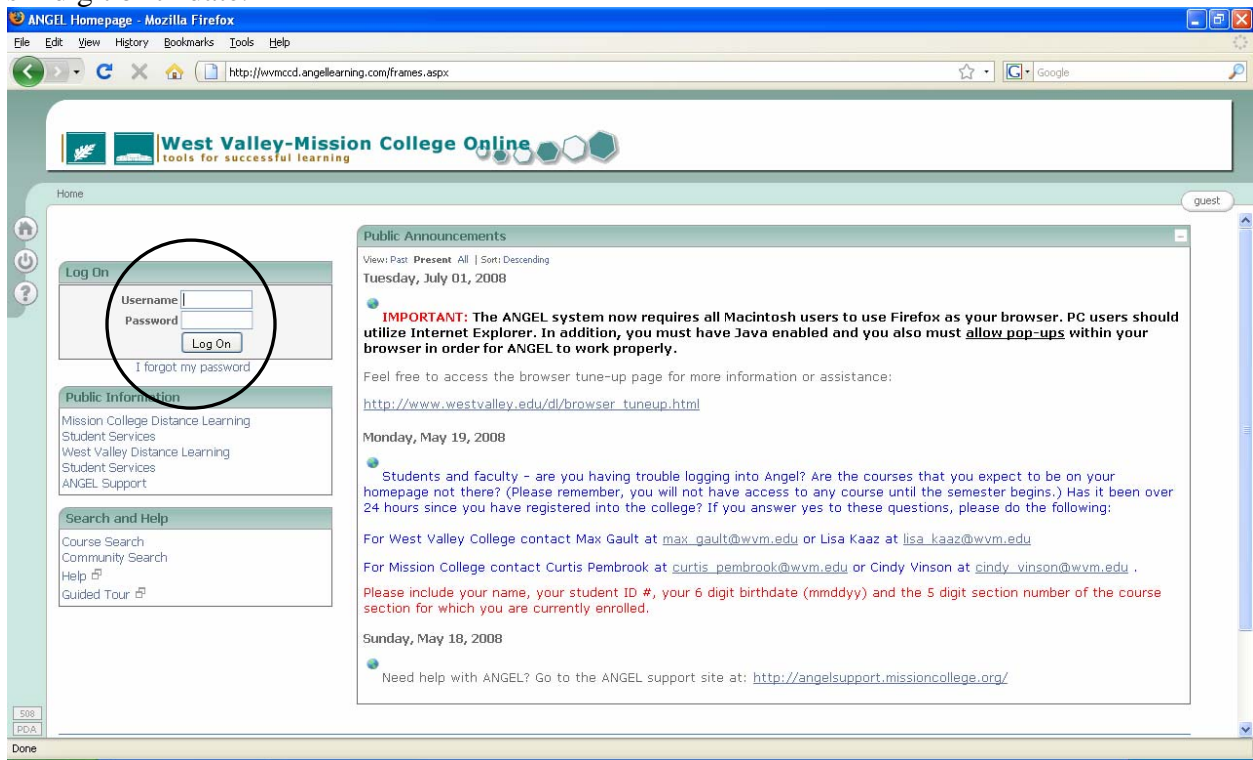


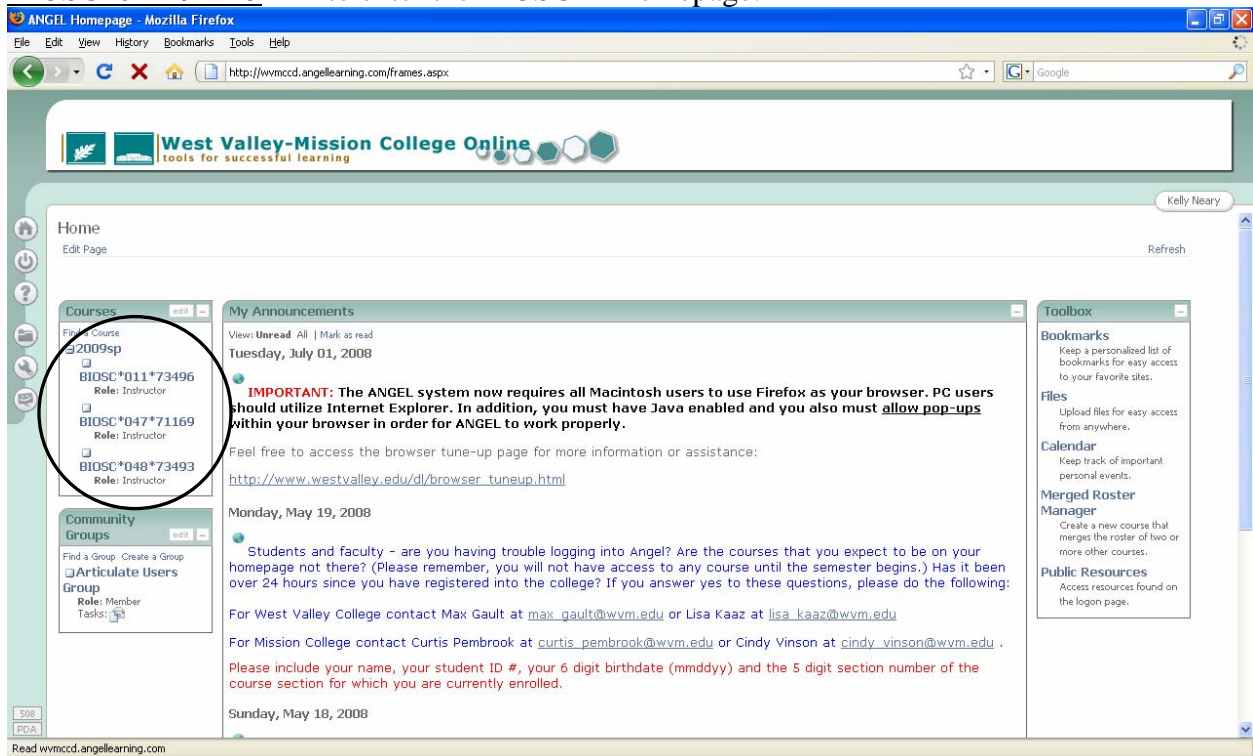
Directions for using the Angel website

Go to <http://wvmccd.angellearning.com/frames.aspx>. Your screen should look like this:

Fill in your login information. Your username is your Datatel number and your password is your six digit birth date.

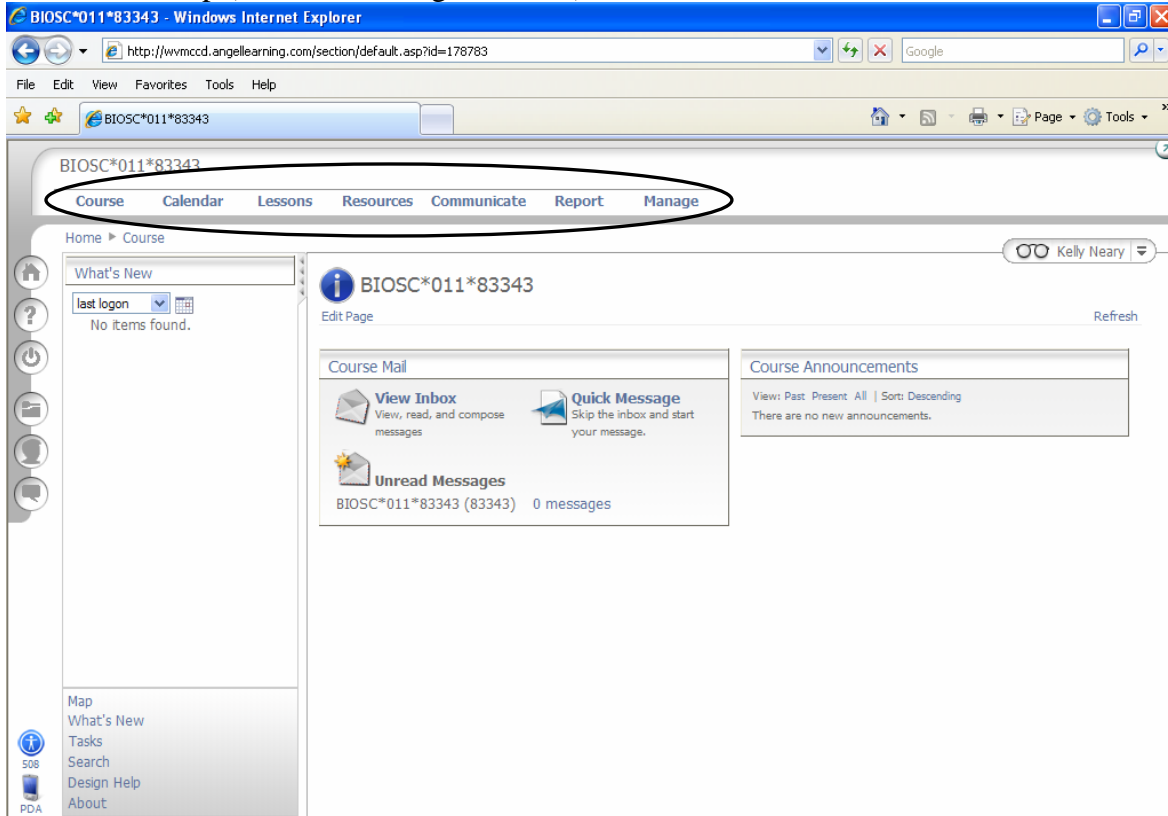


Once you are logged in, your screen will look like the figure below. Notice on the left side of the screen (circled in figure below) there is a list of courses in which you are registered. Click on the [BIOSC*011*91145](#) link to enter the BIOSC 11 homepage:

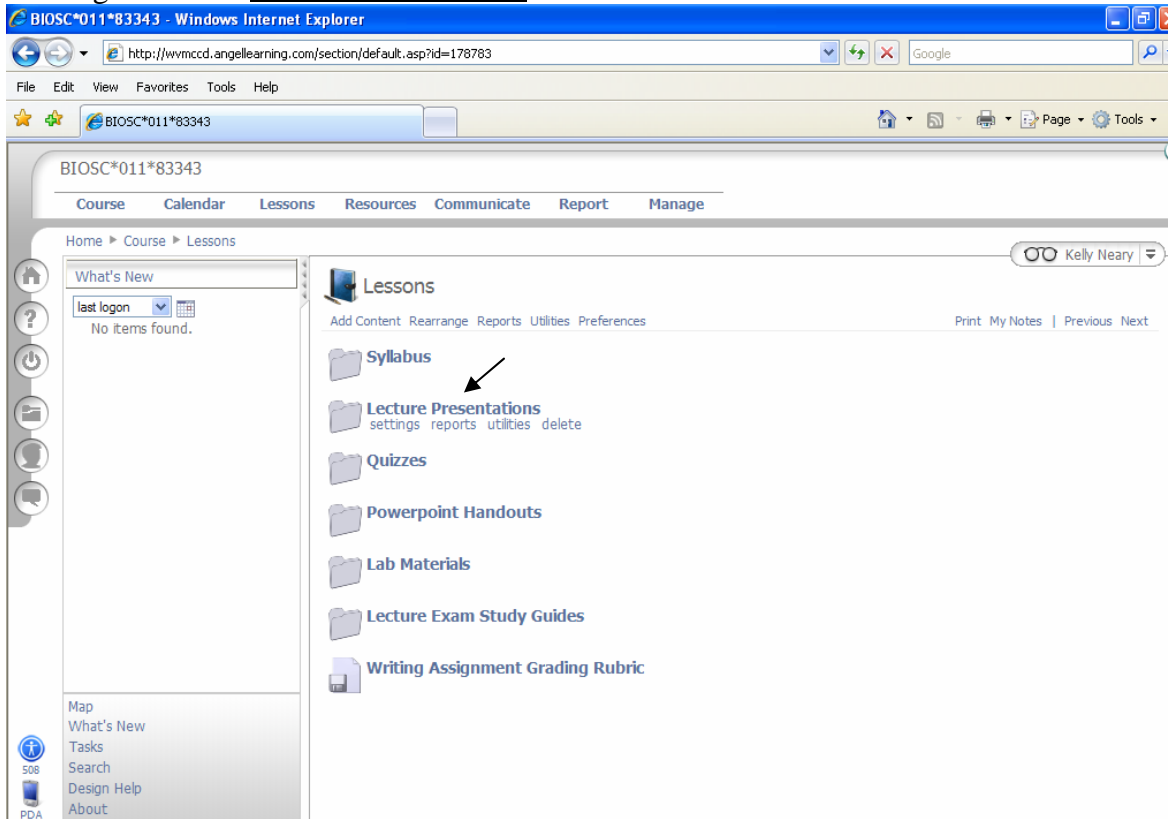


Directions for using the Angel website

Notice at the top (circled in the figure below) there are several links. Click on Lessons.

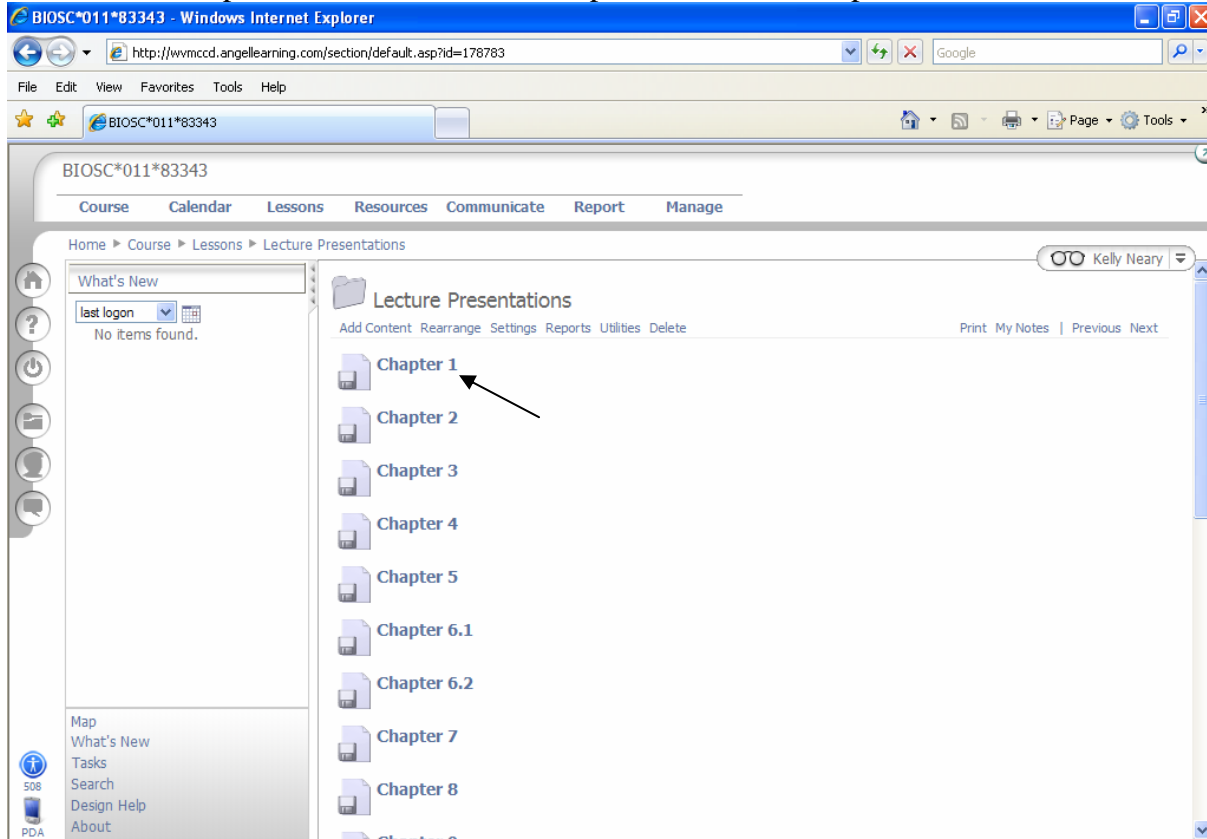


You will see a list of folders which show you what content is available for downloading or viewing. Click on Lecture Presentations.



Directions for using the Angel website

Click on the Chapter 1 link to view the Flash presentation for Chapter 1.



The screenshot shows a Windows Internet Explorer browser window displaying the Angel learning management system. The address bar shows the URL: <http://wvmccd.angellearning.com/section/default.asp?id=178783>. The page title is "BIOSC*011*83343". The navigation menu includes "Course", "Calendar", "Lessons", "Resources", "Communicate", "Report", and "Manage". The breadcrumb trail is "Home > Course > Lessons > Lecture Presentations". The user is logged in as "Kelly Neary". The main content area is titled "Lecture Presentations" and contains a list of presentation files: "Chapter 1", "Chapter 2", "Chapter 3", "Chapter 4", "Chapter 5", "Chapter 6.1", "Chapter 6.2", "Chapter 7", and "Chapter 8". An arrow points to the "Chapter 1" link. The left sidebar contains a "What's New" section with a "last logon" dropdown and "No items found." message, and a "Map" section with links for "What's New", "Tasks", "Search", "Design Help", and "About".