

(2)

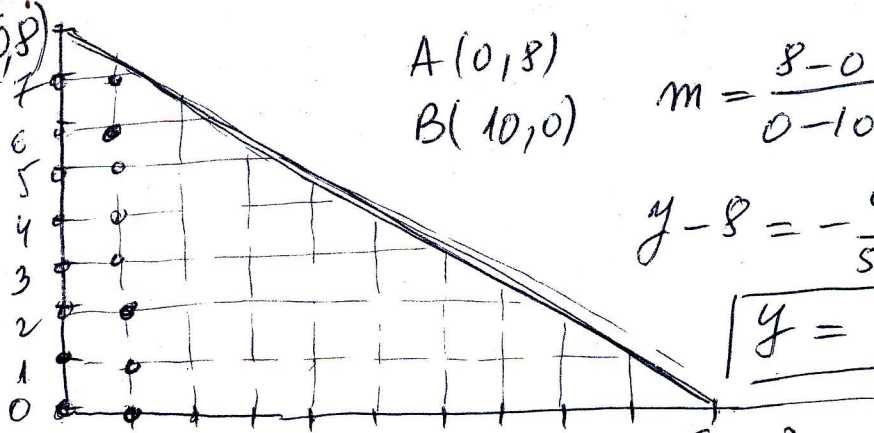
(7,8)

A(0,8)
B(10,0)

$$m = \frac{8-0}{0-10} = -\frac{4}{5}$$

$$y-8 = -\frac{4}{5}(x-0)$$

$$y = -\frac{4}{5}x + 8$$



(10,0)

- $x=0 \quad y=8 \Rightarrow \textcircled{9}$
- $x=1 \quad y = -\frac{4}{5} + 8 = \frac{36}{5} > 7 \Rightarrow \textcircled{8}$
- $x=2 \quad y = -\frac{4}{5} \cdot 2 + 8 = \frac{32}{5} > 6 \Rightarrow \textcircled{7}$
- $x=3 \quad y = -\frac{4}{5} \cdot 3 + 8 = \frac{28}{5} > 5 \Rightarrow \textcircled{6}$
- $x=4 \quad y = -\frac{4}{5} \cdot 4 + 8 = \frac{24}{5} > 4 \Rightarrow \textcircled{5}$
- $x=5 \quad y = -\frac{4}{5} \cdot 5 + 8 = 4 \Rightarrow \textcircled{5}$
- $x=6 \quad y = -\frac{4}{5} \cdot 6 + 8 = \frac{14}{5} > 3 \Rightarrow \textcircled{4}$
- $x=7 \quad y = -\frac{4}{5} \cdot 7 + 8 = \frac{12}{5} > 2 \Rightarrow \textcircled{3}$
- $x=8 \quad y = -\frac{4}{5} \cdot 8 + 8 = \frac{8}{5} > 1 \Rightarrow \textcircled{2}$
- $x=9 \quad y = -\frac{4}{5} \cdot 9 + 8 = \frac{4}{5} < 1 \Rightarrow \textcircled{1}$
- $x=10 \quad y=0 \Rightarrow \textcircled{1}$

Answer = 51

ANSWER : A